



COMPLETION REPORT

CYCLONE REMAL

SUPPORTED BY: ASIA PACIFIC ALLIANCE FOR DISASTER MANAGEMENT (A-PAD)

IMPLEMENTED BY: COMMUNITY INITIATIVE SOCIETY (CIS)

PROJECT TITLE:

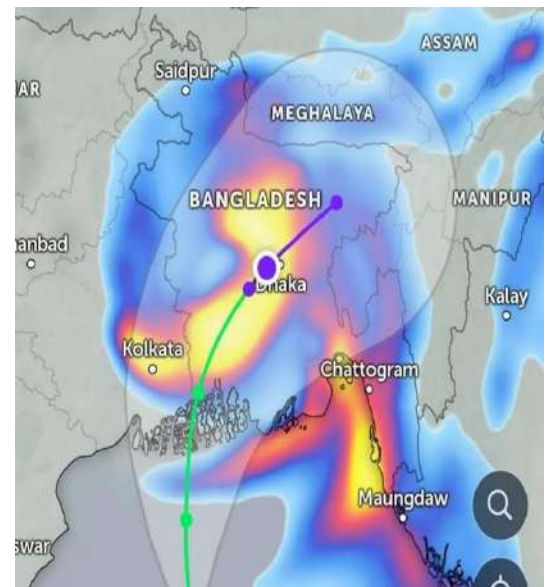
EMERGENCY ASSISTANCE AND HUMANITARIAN RESPONSE FOR THE CYCLONE REMAL AFFECTED VULNERABLE COMMUNITIES IN BAGERHAT AND PATUAKHALI DISTRICT

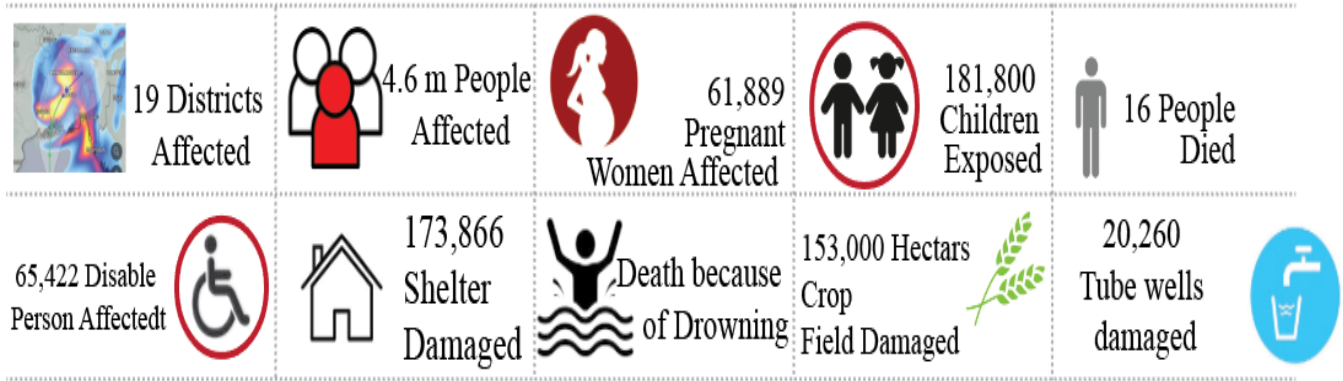
BACKGROUND:

The Severe Cyclonic Storm Remal was a notably robust and incredibly devastating tropical cyclone that impacted West Bengal and Bangladesh, becoming the most expensive recorded tropical cyclone in Bangladesh in May 2024. This cyclone marked the first depression and cyclonic storm of the 2024 North Indian Ocean cyclone season. According to the Bangladesh Meteorological Department, it intensified into a cyclone from a deep depression on the evening of May 25th. The cyclone made landfall on the West Bengal and Bangladesh's Sundarban Delta, close to the border at 8:30 pm on Sunday, May 26th, as a severe cyclonic storm. During landfall, the storm's speed ranged between 100 and 135 kilometers per hour in the coastal area. Regrettably, Remal claimed the lives of at least 84 people, including 65 in India and 16 in Bangladesh. Approximately 30 million people in Bangladesh and many in West Bengal were affected by power outages.

SITUATION OVERVIEW:

- Cyclone Remal has been identified as the most devastating cyclone to impact Bangladesh in recent years. According to the Government's preliminary assessment (SoS Form), **4.6** million people were affected across 19 districts.
- As of the latest report, **17** million individuals were still experiencing power outages, and approximately **20,000** cell towers were non-operational nationwide.
- There are **20,260** non-functional water points/tube wells and 30,301 damaged sanitation facilities.
- There have been **16** fatalities resulting from various causes such as falling trees, wall collapses, drowning, and snake bites, alongside 22 reported injuries.
- In areas affected by cyclones, contaminated water and damaged sanitation systems present a significant risk of disease outbreaks, such as diarrhea, acute respiratory infections (ARI), as well as skin, eye, and ear infections.
- **807,023** individuals were evacuated to **9,424** shelters across 19 districts. While many have returned home, those with destroyed houses remain in shelters, with neighbors, or with families.





RESPONSE IN DISASTER PREPAREDNESS:

Disaster preparedness is essential for minimizing the detrimental health impacts of natural disasters. Our organization consistently prioritizes disaster preparedness. For instance, during Cyclone Remal, we actively collaborated with Governmental bodies and network partners to minimize the cyclone's impact.

CIS collaboratively worked with Government of Bangladesh for preparing the Cyclone Shelters and schools.

- Prepared plans to mitigate the risk of cyclones and organized the packaging of emergency food and safety equipment.
- Emergency health support to the affected individuals in collaboration with our health partners at Dhaka Community Hospital Trust (DCH Trust).
- Support pregnant women by facilitating their access to prenatal checkups and assisting them in reaching local healthcare facilities.
- CIS is responding in efforts to prepare damaged homes and provide shelter materials to people affected by the cyclone. A-PAD Bangladesh collaborated with the CPP to mitigate the impact of Cyclone Remal.
- An advisory has been issued to coastal areas to alert residents to potential dangers, prompting them to seek shelter.
- Assist in clearing the road block caused by the fallen trees and houses.





and

ACTIVITY OBJECTIVES:

The proposed emergency response intervention aims to address the immediate needs of families affected by the recent cyclone in the coastal areas of Galachipa Union, Galachipa Upazila, Patuakhali District, and Rayenda Union, Sarankhola Upazila, Bagerhat District, Bangladesh. The distribution of emergency food packs, ORS powder, water purification tablets, and fishing nets was carried out to support the affected communities and help them restore normalcy in their lives.

BRIEF DESCRIPTION OF THE ACTIVITIES:

Patuakhali and Bagerhat Districts are coastal areas of Bangladesh, which were the most affected areas by Cyclone Remal; as the flood protection embankment broke, huge amounts of crops were destroyed, fish and shrimp farms were damaged, and thousands of families became homeless in a matter of days, along with the increase in diarrheal patients.

- Food packs for 200 Families
- ORS an Water Purification Tablets 500 Families
- Distributed Fishing Nets among 50 Fishermen.

PATUAKHALI RELIEF PROGRAM:

CIS arranged a food relief program at Galachipa Union in Galachipa Upazila as planned. CIS distributed food packs to 100 families, ORS and, water purification tablets to 250 families to ensure safe drinking water, and 25 fishing nets to the fishermen as the livelihood materials. CIS staff survey the market and purchase materials after packaging all the relief handed over to the local field staff. Before the date, CIS announces all over the Golachipa local area through micking. On 20,22, 24, and 26 June 2024 every spot 25 people gathered around at specific relief spots to get their relief as it was a crucial time. Everyone maintains social distancing and safety measures while waiting in queue. Old-age people and pregnant women were prioritized and got assistance from CIS team members to get their relief at home Some CIS members went door-to-door to give food who badly needed help. CIS involved their volunteer team for relief distribution.

SL No	Place	Supporting Materials	Quantity	Remarks
01.	Galachipa, Patuakhali	Food Items	100 Families	
02.		ORS and Water Purification Tablets	250 Families	
03.		Fishing Net	25 Fishermen	





BAGERHAT RELIEF PROGRAM:

At Rayenda Union, Sarankhola Upazila, CIS conducted a food relief program, where relief items were distributed over four days to around 25 individuals per day, with a focus on prioritizing the needs of elderly and pregnant women. Additionally, CIS identified and assisted individuals who had lost their homes due to the cyclone, providing them with the necessary support. Throughout these relief efforts, CIS actively engaged its volunteer team to facilitate the distribution process effectively. On 20, 22, 24, and 26 June 2024 every spot 25 people gathered around at specific relief spots to get their relief as it was a crucial time. Everyone maintains social distancing and safety measures while waiting in queue.

SL No	Place	Supporting Materials	Quantity	Remarks
01.	Sarankhola, Bagerhat	Food Items	100 Families	
02.		ORS and Water Purification Tablets	250 Families	
03.		Fishing Net	25 Fishermen	



SUPPORT FROM THE LOCAL PARTNERS:

Prior to the cyclone, CIS secured funding from its network partners and received in-kind support for the relief efforts. This included funding from Eastern Housing Ltd. and the DHEM Foundation, as well as support in the form of food packs from Seven One Ltd. and transport assistance from Mayesha Transport. This collaborative effort enabled CIS to provide vital support to the affected communities in a timely and effective manner. CIS provided following support:

SL No	Place	Supporting Materials	Quantity	Remarks
01	Bagerhat	Food Item	315 Families	
02	Patuakhali	Food Item	315 Families	



CONCLUSION:

During the devastation caused by Cyclone Remal, which stands as one of the deadliest cyclones in the history of Bangladesh, the impact on the people was profound. Both the loss of life and destruction of property were significant. However, the dedicated team at CIS worked tirelessly to address this dire situation, focusing on providing aid, rescue, and rehabilitation to the vulnerable communities affected by the cyclone. Throughout their efforts, the CIS team prioritized not only the safety of their own team members but also the safety of the affected communities. The entire program was executed successfully, and the people expressed great satisfaction with the activities undertaken by CIS in the aftermath of the cyclone.